

The burden of chronic disease in Canada is *growing...*

1 in 2

Canadians will die
from cancer or a
chronic disease*



- 1 in 2 Canadians will be diagnosed with **cancer**
- 1 in 12 Canadians live with diagnosed **heart disease**
- 1 in 10 Canadians live with **asthma or COPD**

CanPath is Canada's largest population health research platform



CanPath

CanPath is a **population-health research platform** for assessing the effect of genetics, behaviour, family health history and environment on chronic diseases.

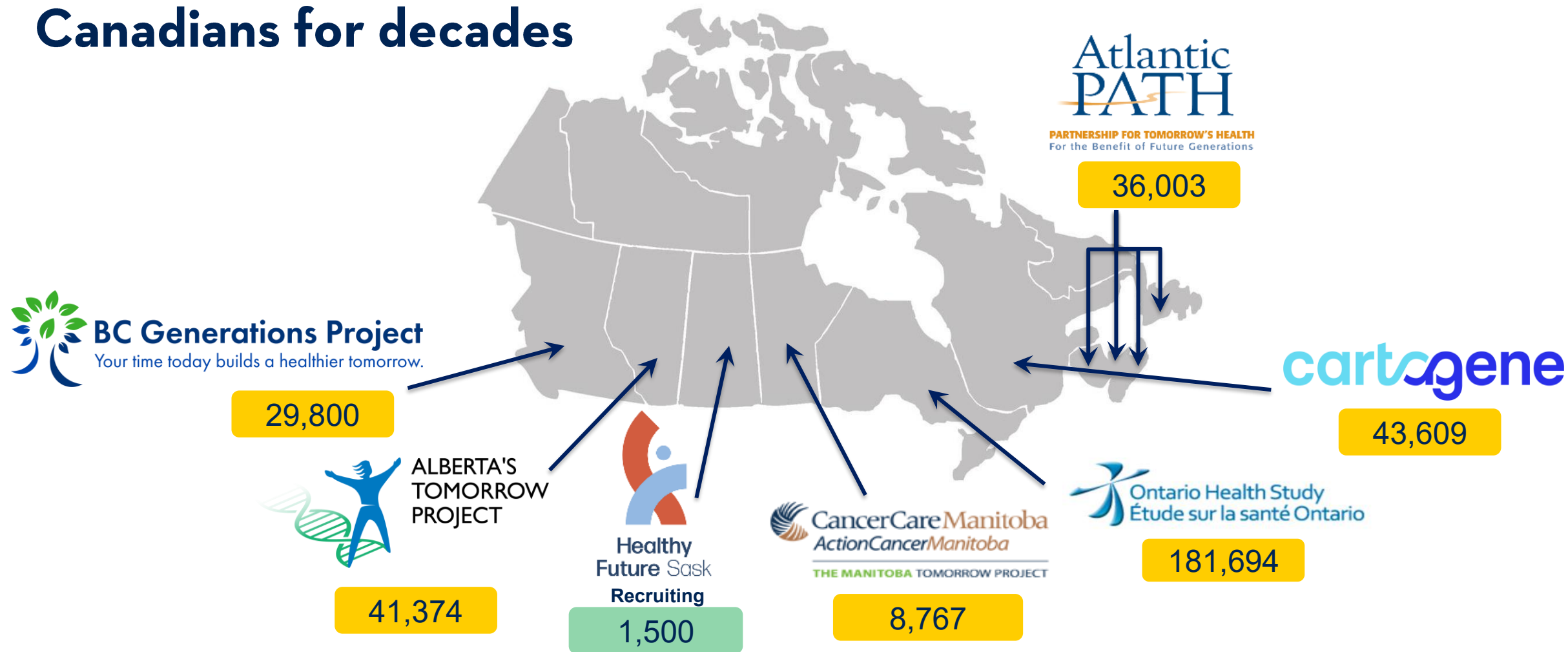


Canada's largest population health research platform

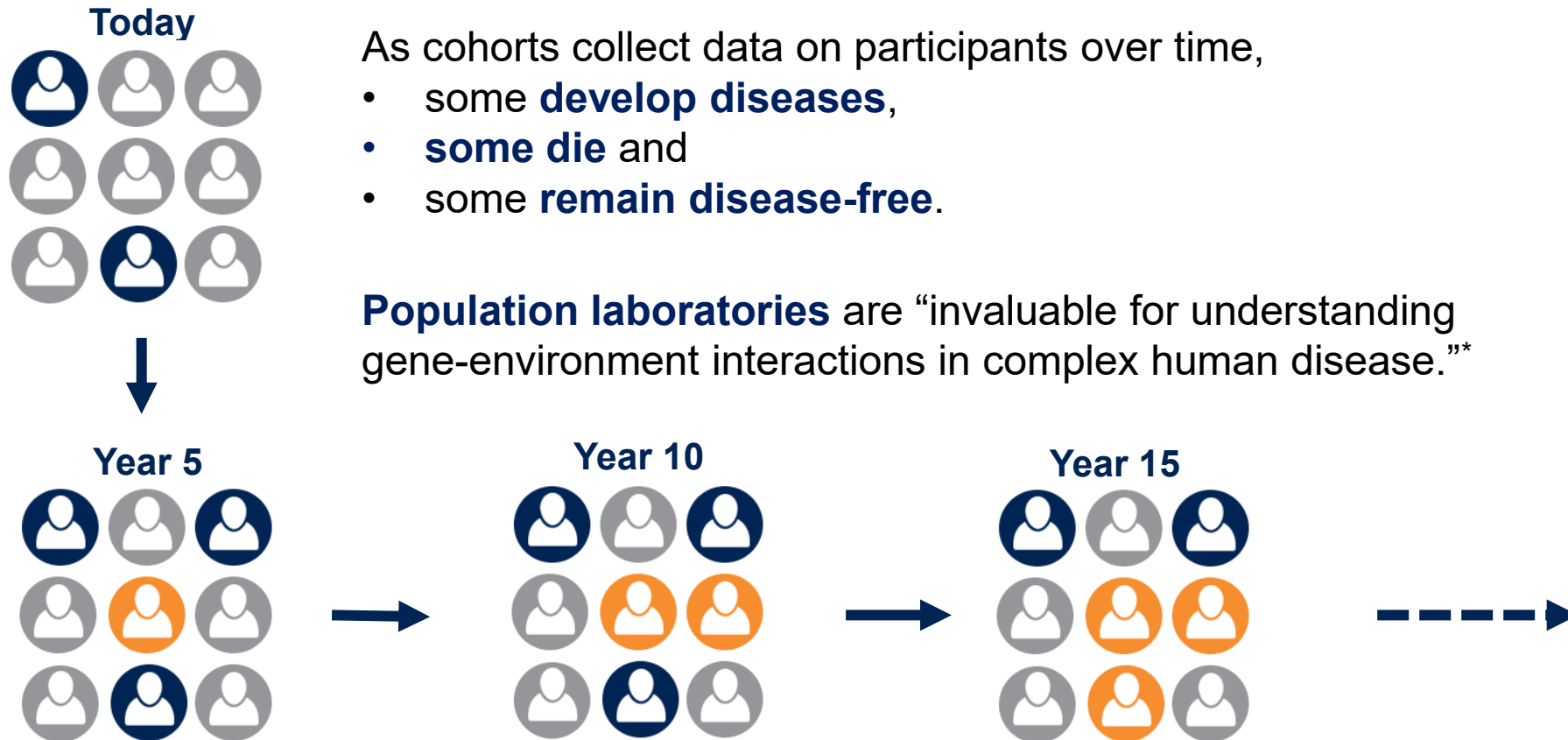


CanPath has **enabled the study of the biology, behaviour and environments of over 330,000 Canadians for over a decade** and continues to reveal hidden causes of common and rare chronic diseases and cancer.

CanPath is following the health of over 330,000 adult Canadians for decades



Large-scale population health cohorts help assess disease risks



**Genes, environment and the value of prospective cohort studies, Manolio TA, 2006*

CanPath value grows over time

MTP is harmonized with national data

CanPath partners with CIHI to integrate health services data

Recruitment began for Healthy Future Sask

COVID-19 Questionnaire data released

CPTP becomes CanPath &
first follow-up data released

Recruitment began for the
Manitoba Tomorrow Project

New scientific home
Established at University of Toronto

Data made available to researchers

Baseline participant recruitment began

Canadian Partnership for Tomorrow Project launched
at the Canadian Partnership Against Cancer

2025

2024

2023

2021

2020

2019

2018

2015

2008

2008

330+
Approved
Projects

360+
Publications

All CanPath participants completed detailed baseline questionnaires & over 120,000 completed follow-up*



Participant
demographics



Health status



Medical history



Mental health*



Prescribed medication



Family health history



Anthropometric
measurements



Working status



Household income



Behaviours: sleep, alcohol, tobacco, marijuana use*, e-cigarette use*, and more



Genotyping at CanPath

Ontario Health Study

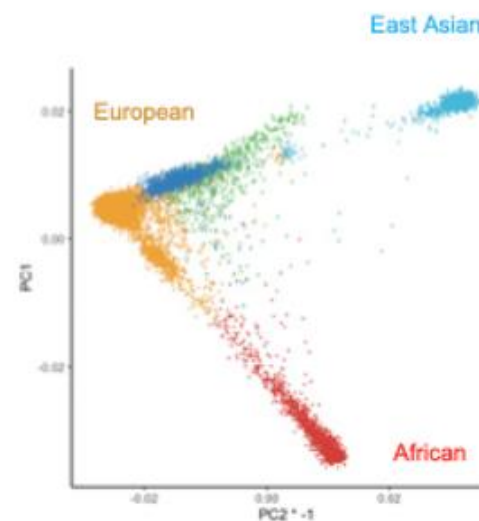
~20,000 participants

CARTaGENE (Quebec)

~30,000 participants

CanPath

~5,000 participants



Majority of European descent (92%)